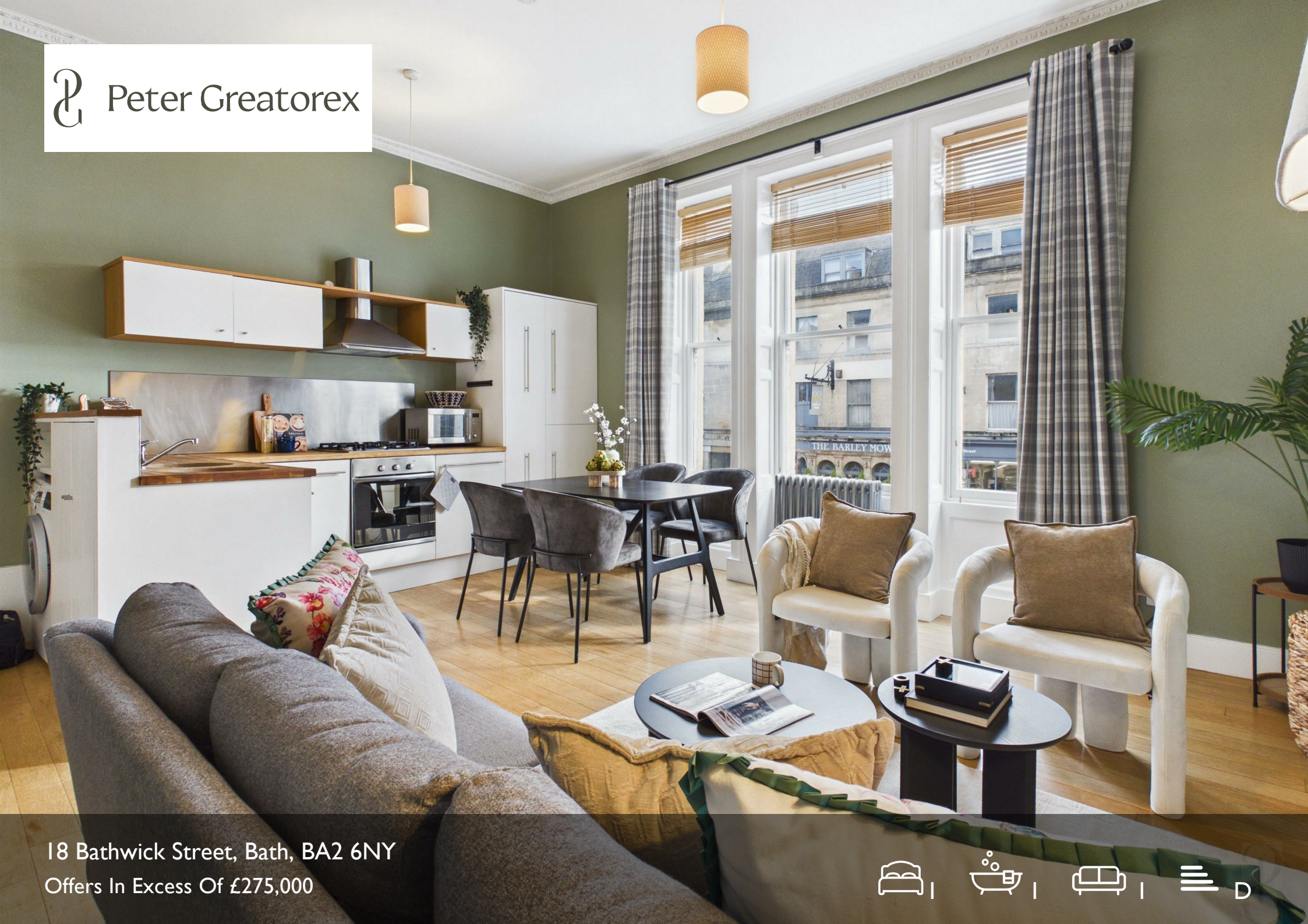


 Peter Greateorex



18 Bathwick Street, Bath, BA2 6NY  
Offers In Excess Of £275,000





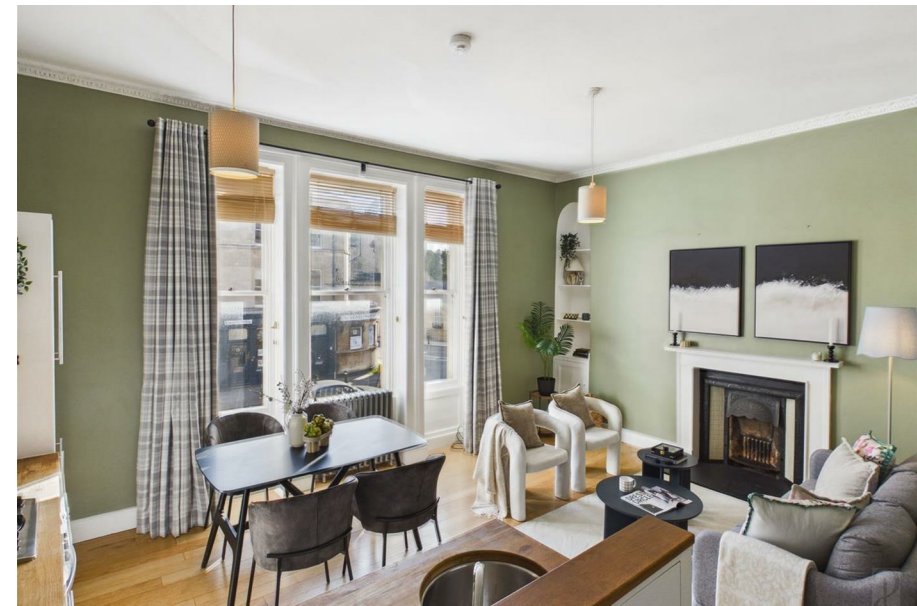
Offers In Excess Of £275,000

# 18 Bathwick Street

Bath, BA2 6NY

- First-floor one bedroomed Georgian apartment
- Central location with flat access to the City
- Tall sash windows and attractive fireplace
- Spacious double bedroom with storage
- Offered for sale with no onward chain
- Set within a handsome period townhouse
- Bright open-plan kitchen/living room
- Integrated kitchen appliances and dining space
- Shower room
- Excellent first time buy or investment property

An elegant first-floor apartment set within a handsome Georgian townhouse on a sought-after terrace close to the heart of Bath. Beautifully presented throughout, the property offers light and airy accommodation with a stylish open-plan kitchen/living space, spacious double bedroom and well-appointed shower room. Ideally positioned within walking distance of the City Centre, just moments from the Holburne Museum, Sydney Gardens and Great Pulteney Street, the apartment is offered with no onward chain.



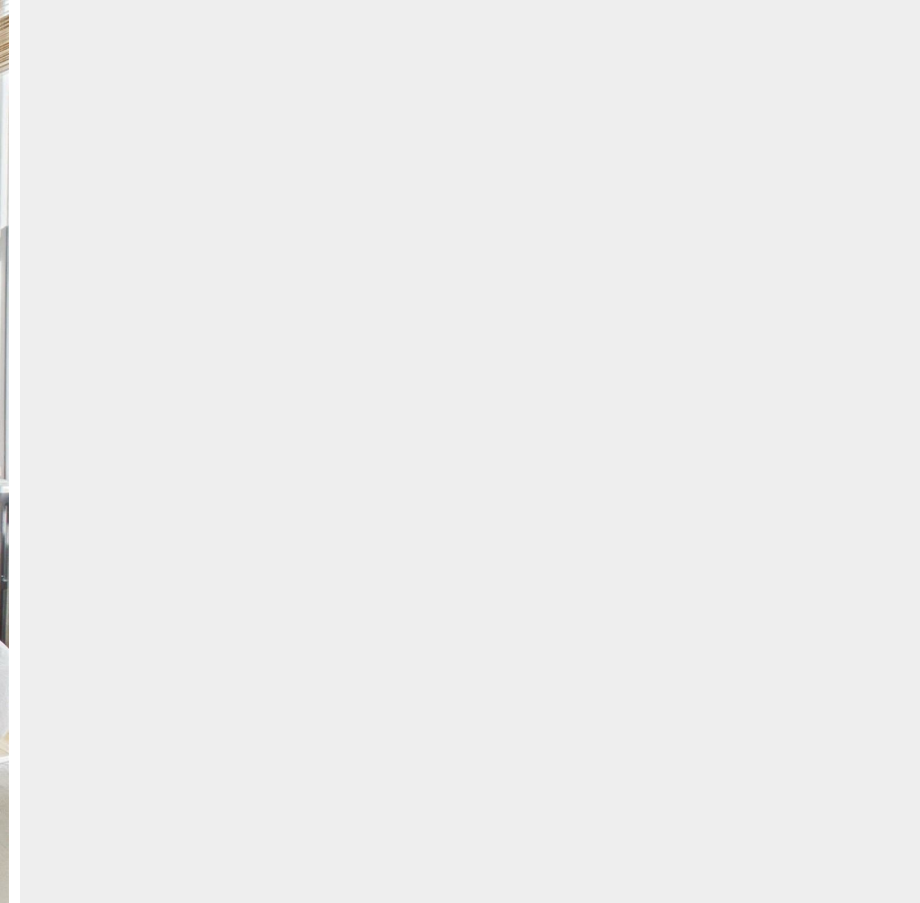
Description

Location

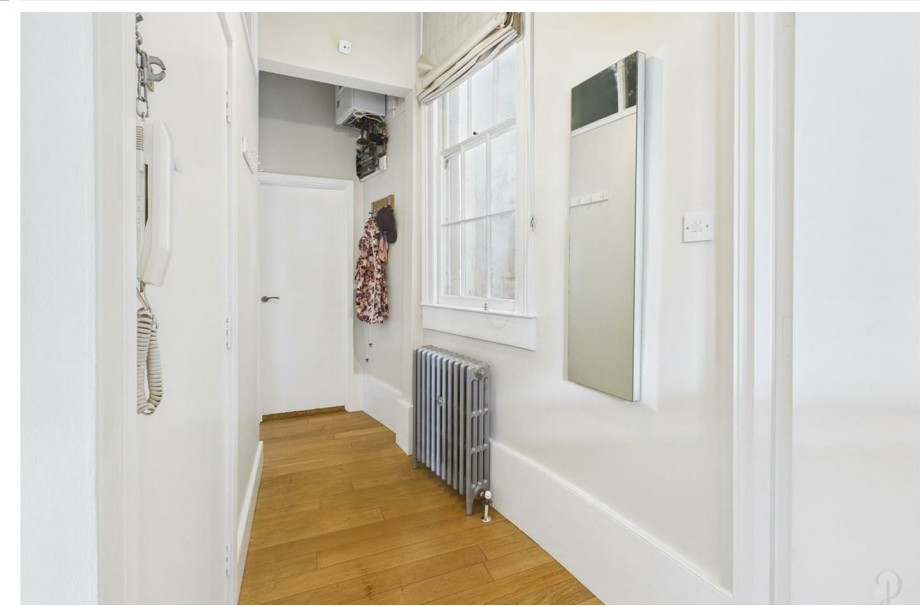
Key Features

Buyer Verification Checks



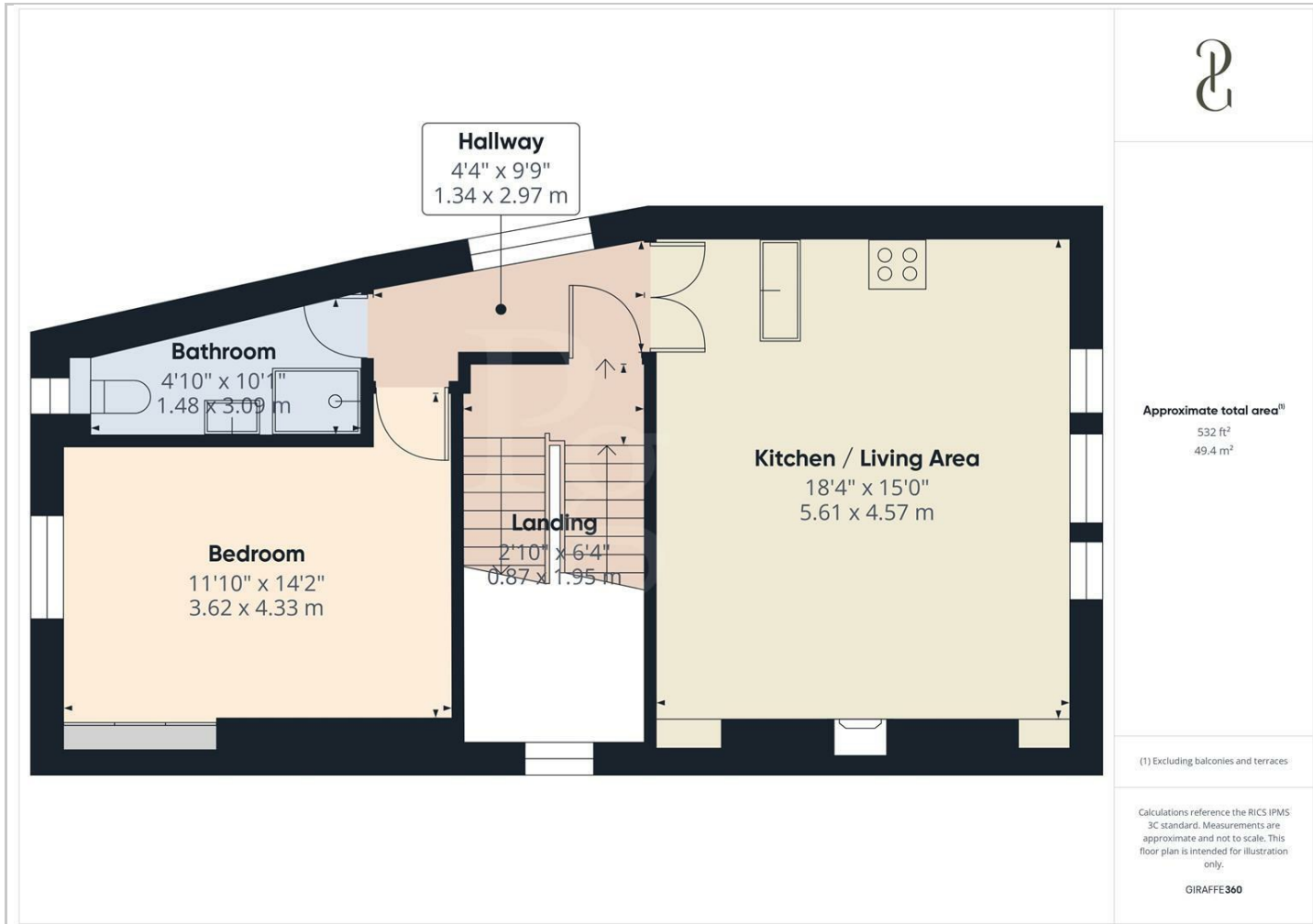


Directions

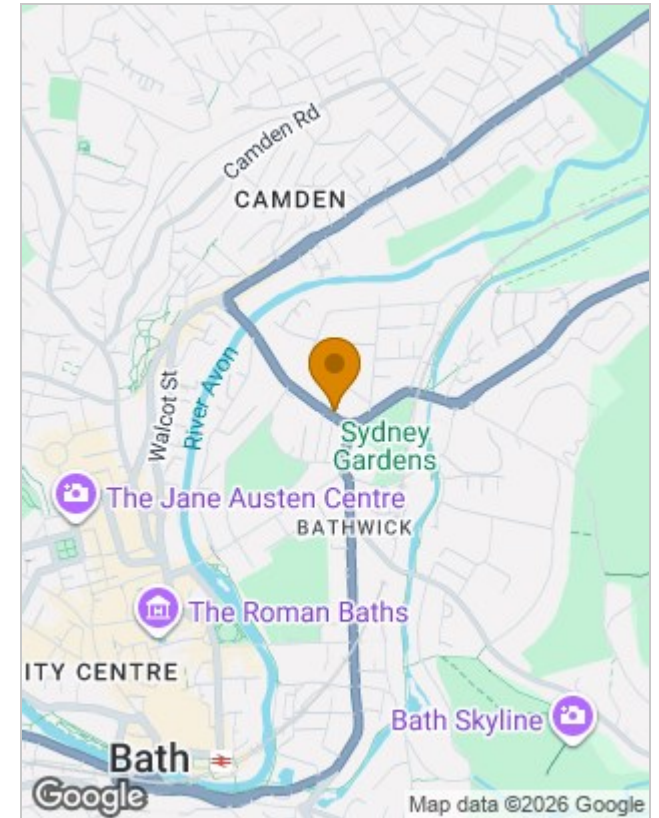




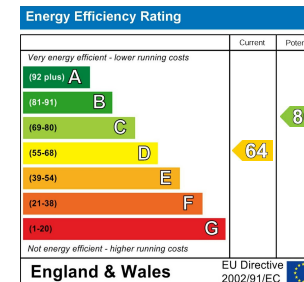
## Floor Plans



## Location Map



## Energy Performance Graph



## Viewing

Please contact our Bath Office on 01225 904999

if you wish to arrange a viewing appointment for this property or require further information.

The particulars are set out as a general outline only for the guidance of intended purchasers or lessees, and do not constitute, any part of a contract. Nothing in these particulars shall be deemed to be a statement that the property is in good structural condition or otherwise nor that any of the services, appliances, equipment or facilities are in good working order. Purchasers should satisfy themselves of this prior to purchasing.

4 Queen Street, Bath, BA1 1HE

Tel: 01225 904999 Email: sales@petergreatorex.co.uk <https://www.petergreatorex.co.uk/>